

PART OF THE SW. 1/4, OF SEC 5, S. 1/2 OF SEC 6, N. 1/2 OF SEC 7& THE NW. 1/4 OF SEC 8 T.7N., R.2E., S.L.B. & M. 135  
SUMMIT EDEN PHASE 1A AMENDMENT 2 AMENDING LOT 11R 12R PARCELS B1 B3

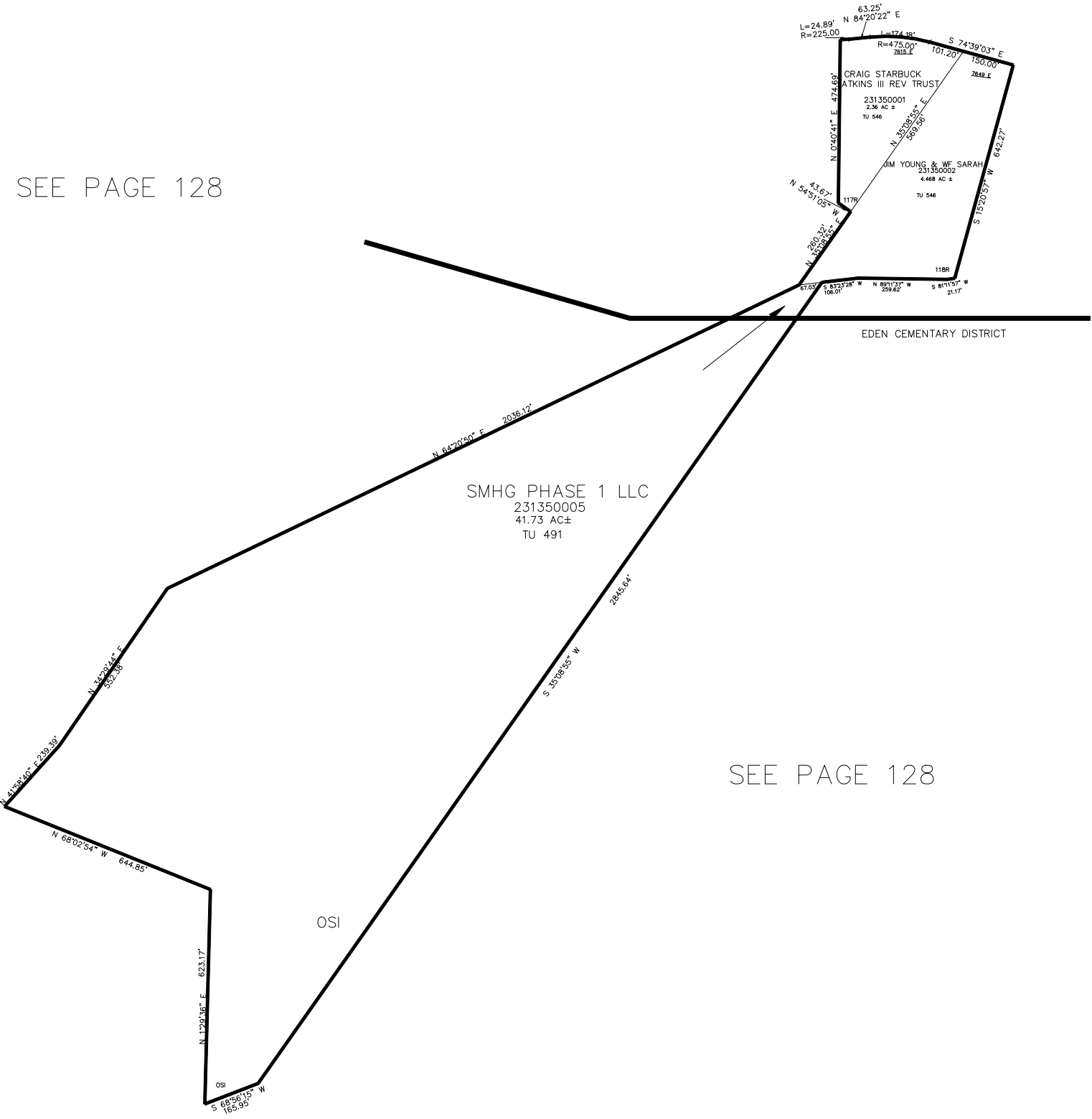
TAXING UNIT: 546, 491

IN WEBER COUNTY  
SCALE 1" = 400'

SEE PAGE 128

SEE PAGE 128

SEE PAGE 12-1



10' UTILITY & DRAINAGE EASEMENTS EACH  
SIDE OF PROPERTY LINES AS INDICATED  
BY DASHED LINES EXCEPT AS OTHERWISE  
SHOWN.

FOR COMPLETE ENG DATA SEE  
ORIGINAL DEDICATION PLAT IN  
BOOK 78, PAGE 54-55 OF RECORDS.